



S-12PM

ARC Fusion Splicer

Specially for *Polarization Maintaining Fiber*

YOUR FUSION SPLICER EXPERT

10+

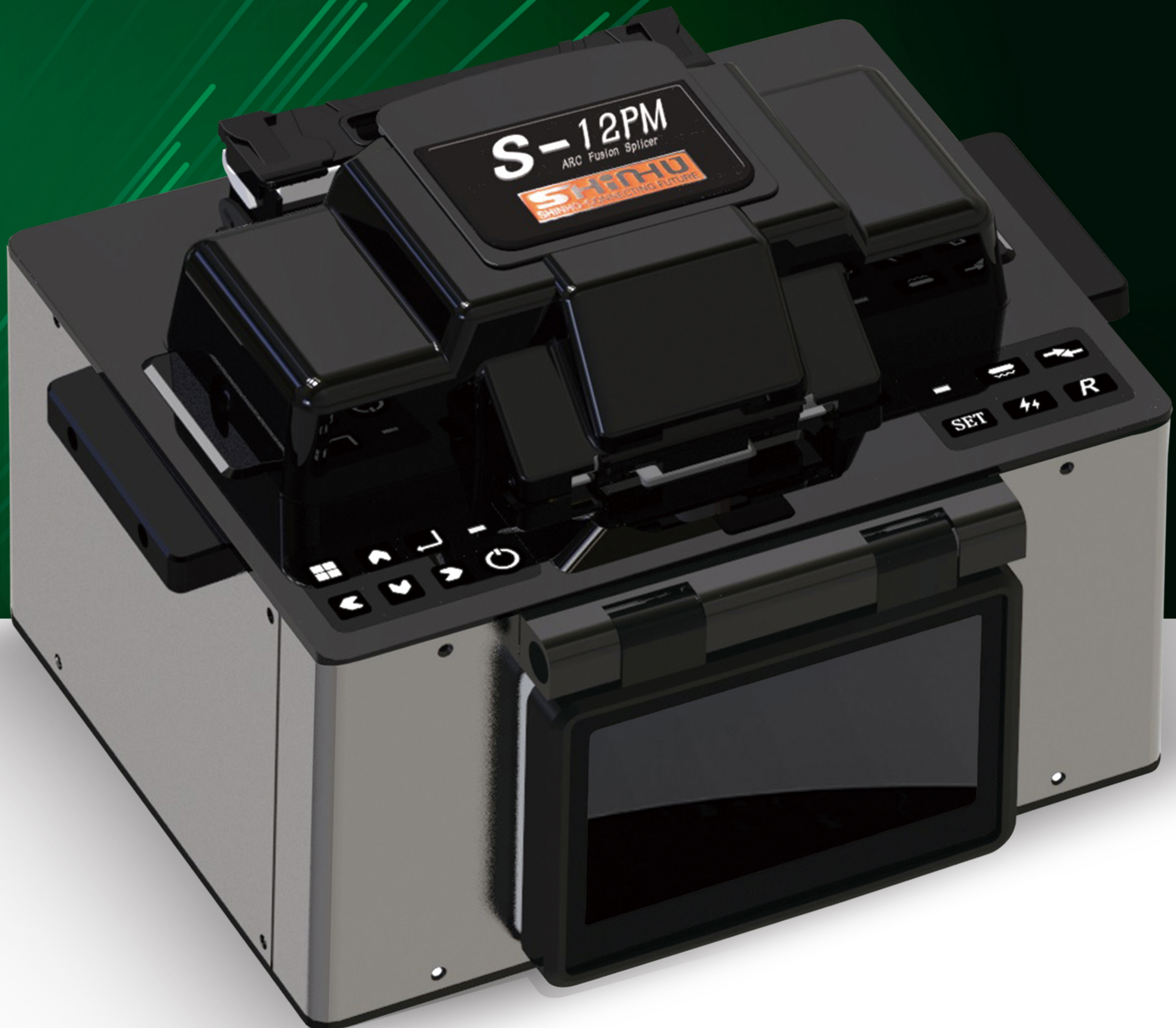
models
splicers

15+

years technical
experience

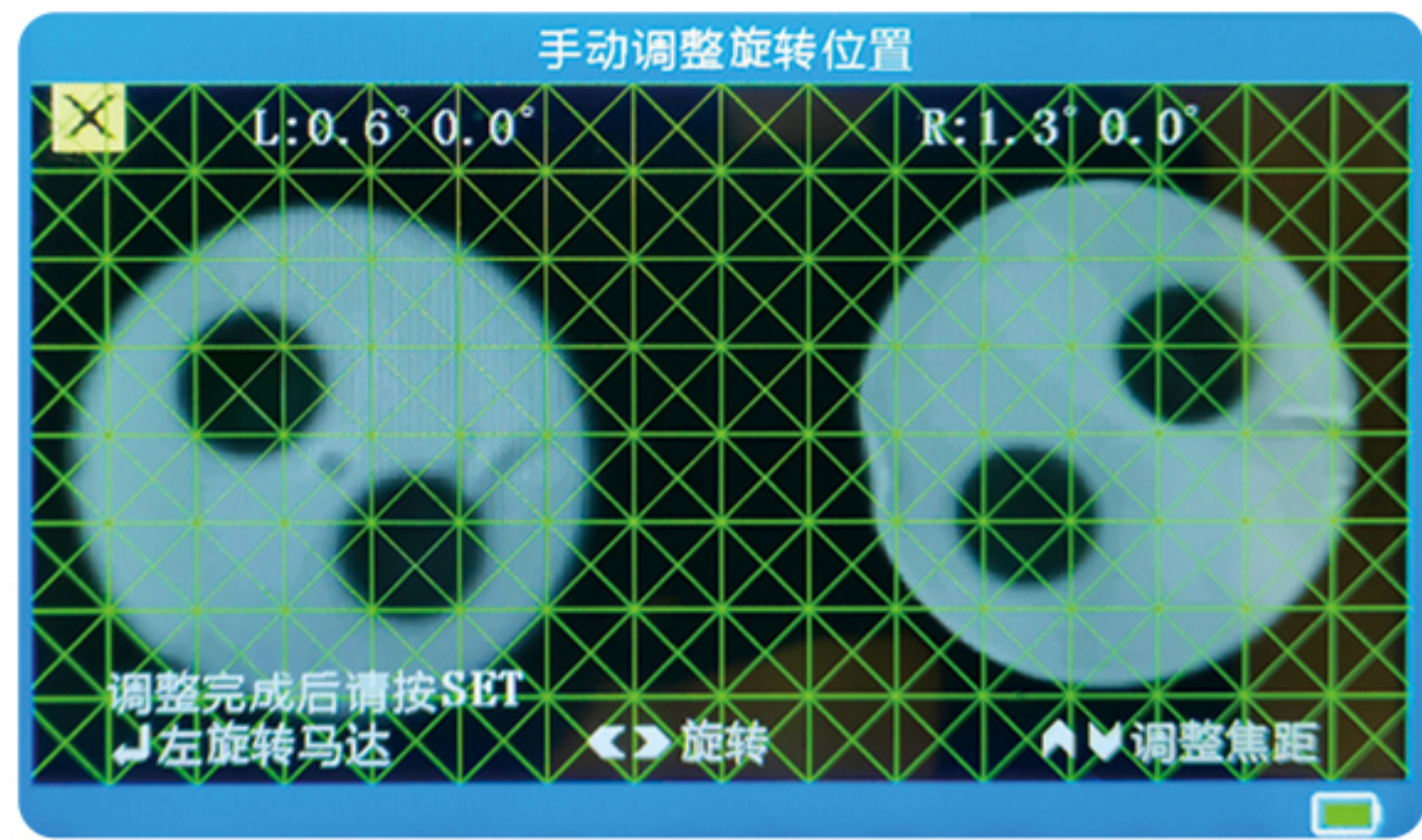
50+

countries
selling



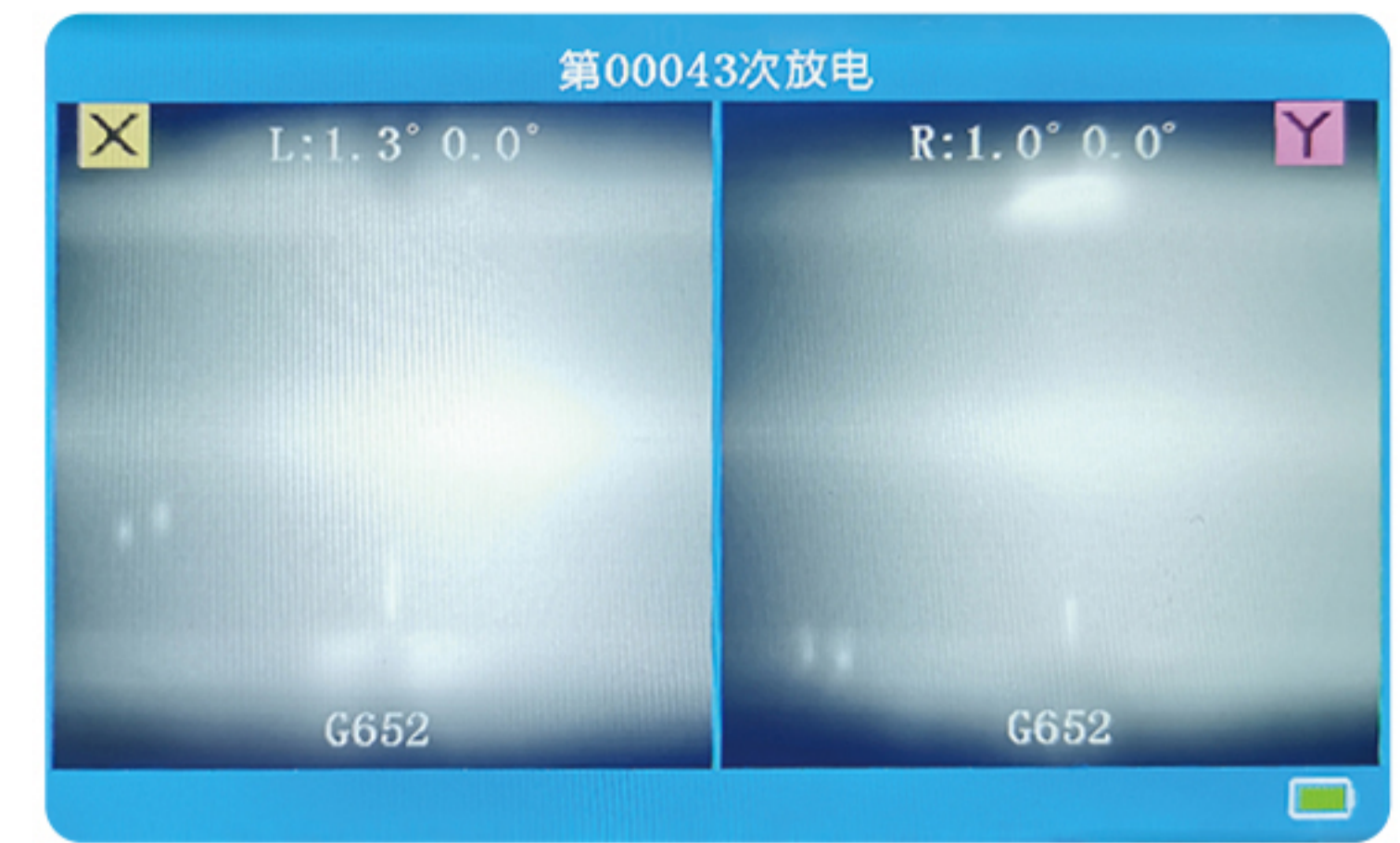
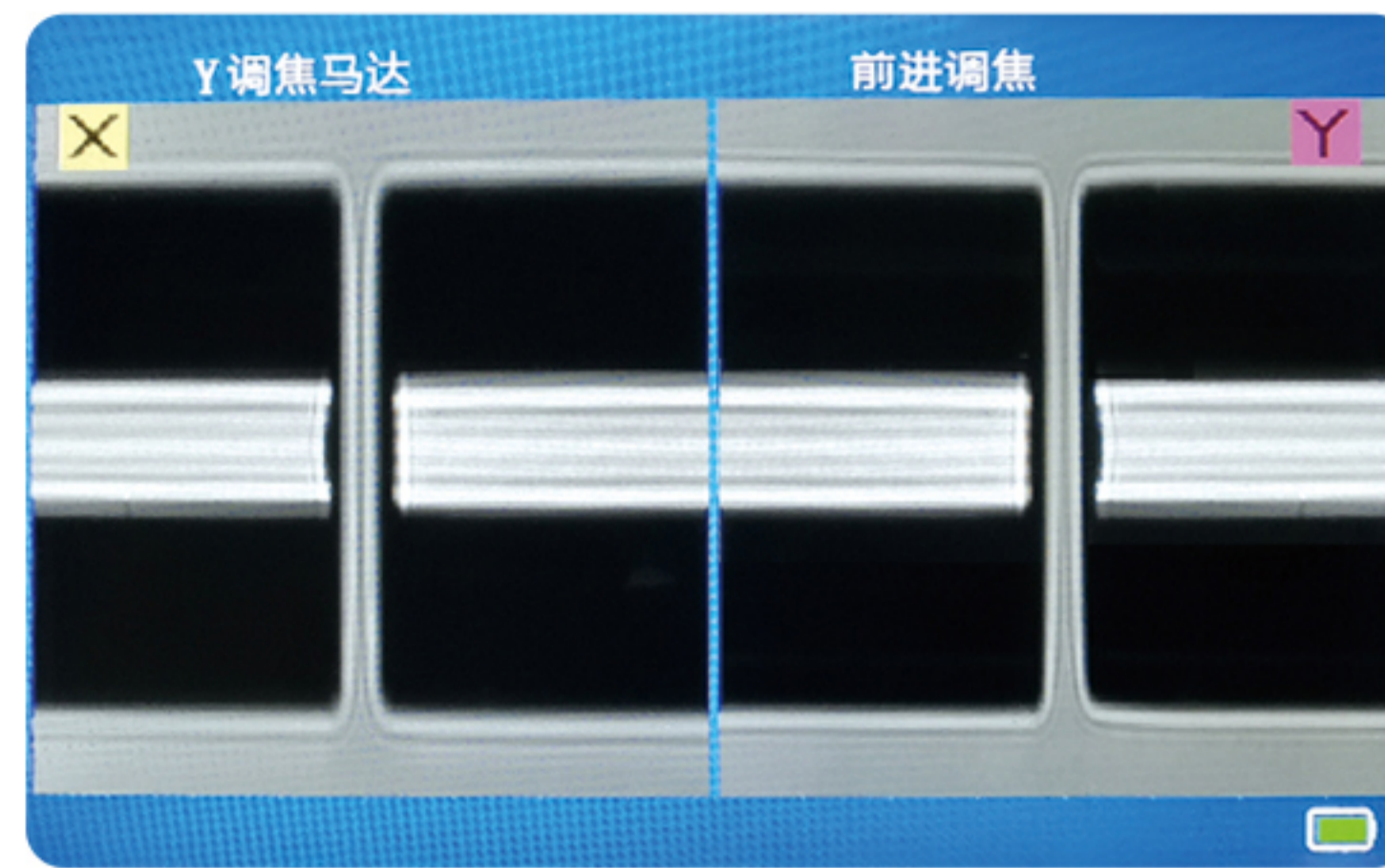
Dual fiber end face imaging patent

Dual fiber end face imaging, direct fiber end face view, more accurate alignment.



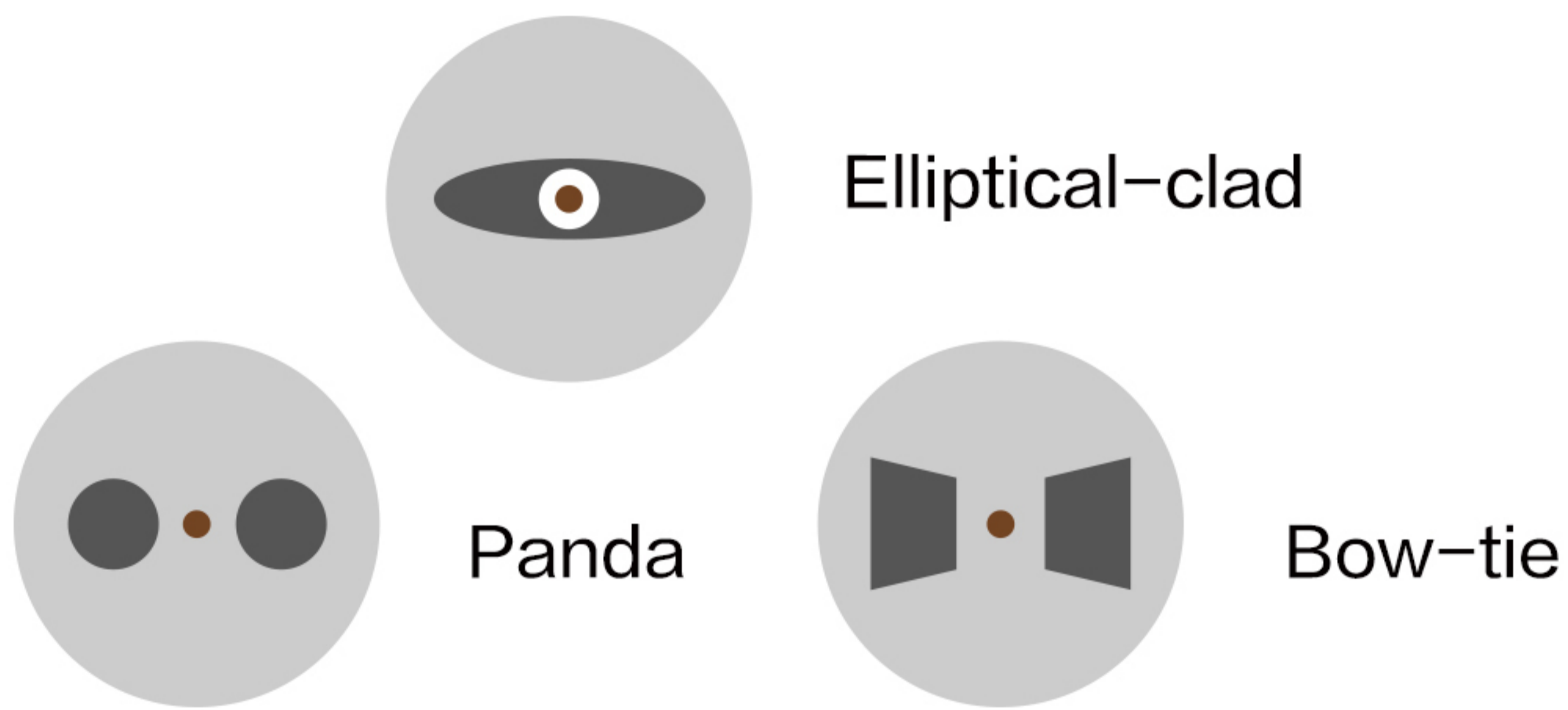
Real time ARC calibration technology

Real time ARC calibration based on fiber types and fiber images, more stable splicing performance.

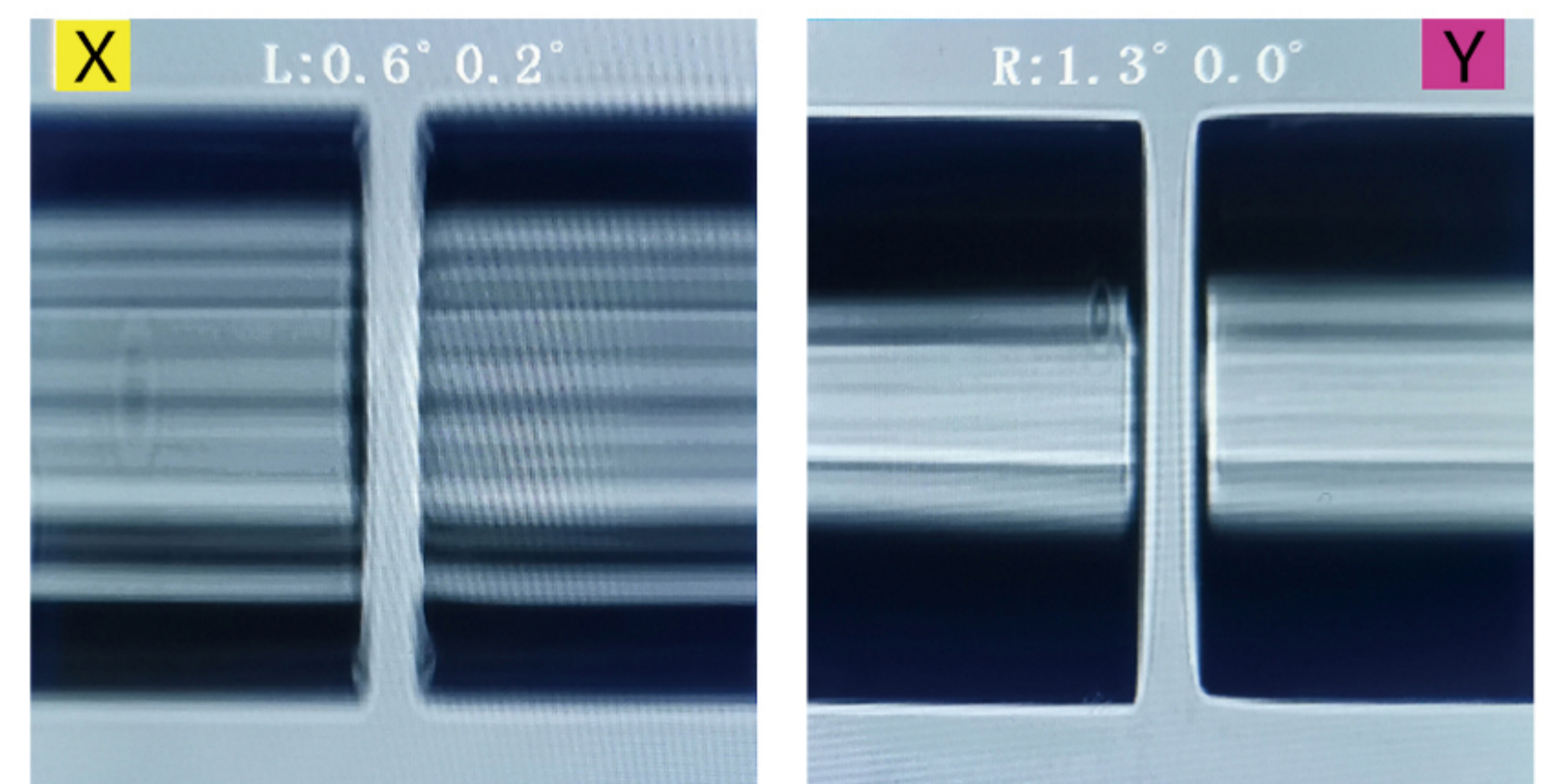


Fiber outline/end face dual mode alignment technology

Alignment between different types fibers could also be very accurate.

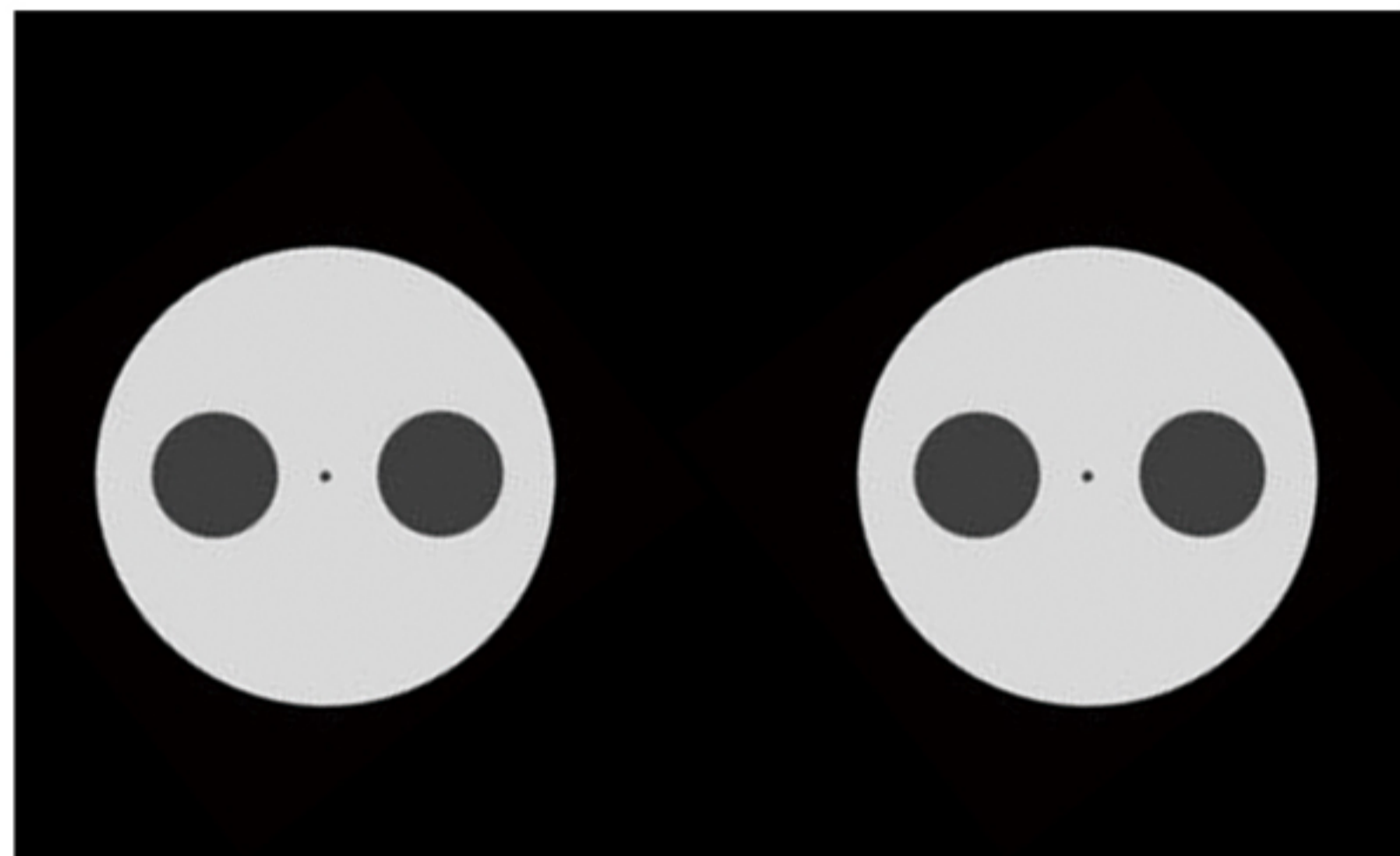


Fiber outline alignment

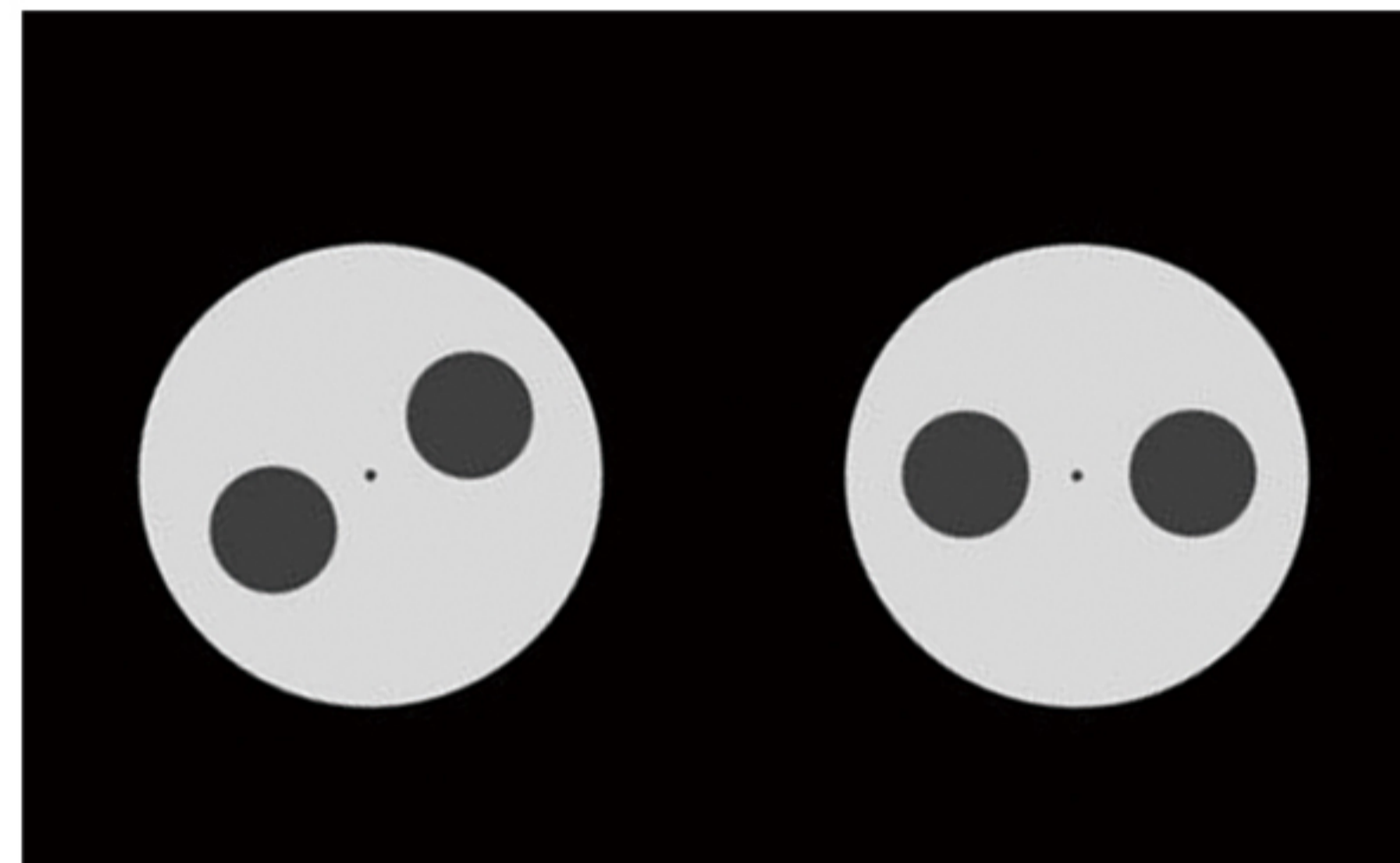


Apply to different angles fiber alignment

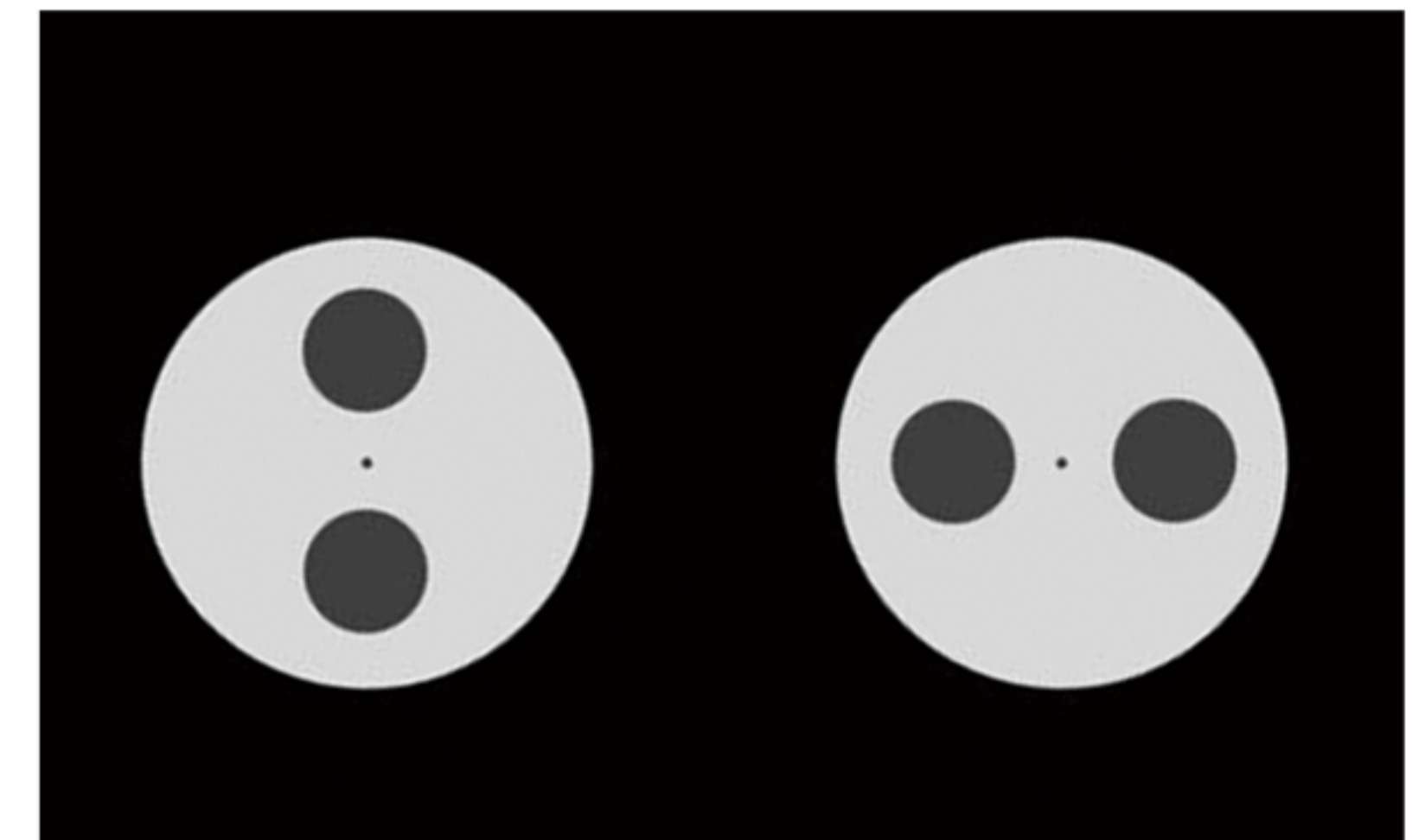
Support 0° , 45° , 90° automatic alignment.



0°



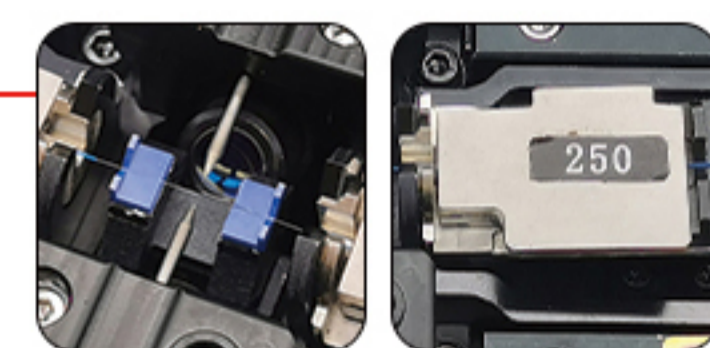
45°



90°

User friendly engineering design

Proper size suitable for all current using scenarios, easy to operate and maintain.



Precise and stable structure design.



Handle/rounded corner design.



Easy & convenient GUI menu design.



Side view



Back view

Specifications

Application	Communi- cation fiber	SMF(ITU-G652), MMF(ITU-G651), NZDS(ITU-G655), DS(ITU-G653), EDF
	PM fiber	Panda, Bow-tie and Elliptical fiber
Cladding diameter		80-250UM
Coating diameter		<900UM
Cleaved length		8~10mm (Standard)
End face direct view		PAS and fiber endface direct view available
Typical splice loss		SMF:0.03dB ; NZDSF:0.05dB ; MMF:0.02dB; PMF:0.06dB
Typical splice time		15 seconds (SMF/MMF), 45 seconds (PM Fiber)
Return loss		> 60dB
Operation mode		Manual/ Auto
Heat mode		Manual/ Auto
Heating time		Typical 30 seconds, support user defined
Extinction ratio		-32dB
Tension test		1.96 (+0%--+20%)
PM Splicing function		Support splicing at 0° , 45° and 90°
Splicing program		40 groups
Data storage		4000 groups data records
Display		5.0 inch colorful LCD display screen
Terminals		USB 2.0 port, for software upgrading, records exporting
Machine dimension		260mm(L)*201mm(W)*172mm(H)
Machine weight		4.5kg
Working temperature		-10°C~50°C
Storage temperature		-20°C~60°C
Power supply		Adaptor, input: AC100-240V(50/60HZ),output: DC11-13.5V 5A

Standard Configuration

